

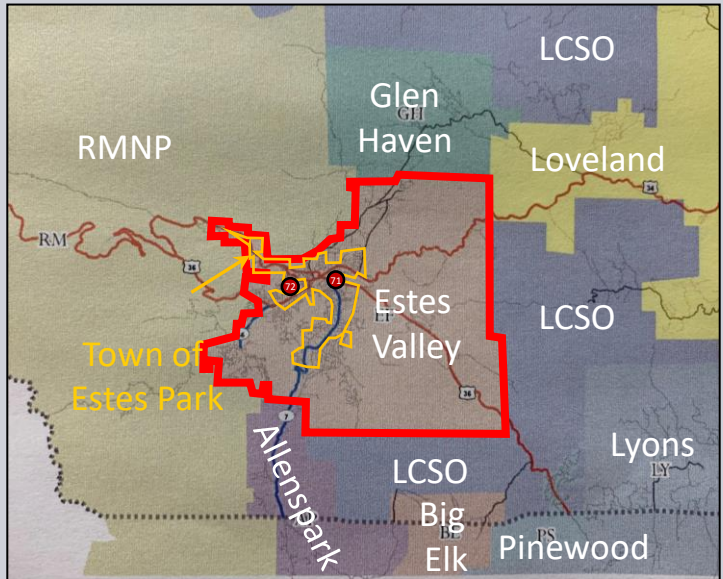
District Overview



The Estes Valley Fire Protection District covers nearly 70 square miles of the Town of Estes Park and surrounding unincorporated Larimer County. We protect a mix of urban municipality, suburban neighborhoods, rural homesteads, and forest. This includes critical infrastructure for the Bureau of Reclamation, National Park Service, and U.S. Forest Service.

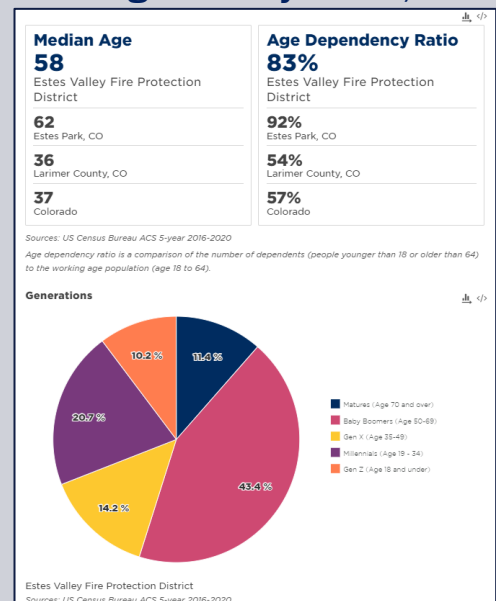
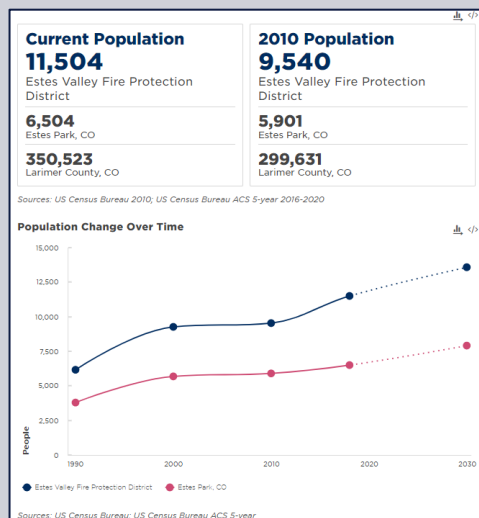
The region had been protected since 1907 by the Estes Park Volunteer Fire Department. Once incorporated in 1917, the Town of Estes Park brought this organization on as a Town department. In 2009, voters approved the formation of the Special District and in 2010 the Estes Valley Fire Protection District began.

The District is considered “combination,” currently served by eight employees and nearly 40 volunteers. We border Rocky Mountain National Park to our west, and the 100% volunteer fire agencies of: Glen Haven, Loveland (Canyon Battalion), Pinewood Springs, Big Elk, and Allenspark. Our nearest career fire agencies are Loveland (Masonville station) and Lyons.



Per 2020 Census data, our community includes 11,504 full-time residents, up nearly 2,000 people in the past 10 years. Summer visitation can bring as many as 40,000 overnight guests and up to 80,000 daytime visitors.

The Town of Estes Park has one of the oldest populations in Colorado, with a median age of 62, and 92% of the population within the Census-defined “dependency ratio,” including those under 18 or over 65. Across the entire Estes Valley we have a median age of 58 and an 83% dependency ratio.



District Organization



The District is overseen by a five-member Board of Directors. Directors are elected through odd-year public elections to four-year terms. Directors must live within the District boundaries, not be actively working for or volunteering for the District and may serve a limit of two consecutive terms.

District personnel are organized into three divisions. Our eight full-time staff are:

ADMINISTRATION (3): Fire Chief, Chief of Staff, Administrative Assistant

SUPPORT SERVICES (3): Division Chief of Support Services, Wildland Program Specialist, Code Application Educator

OPERATIONS (2): Division Chief of Operations & Training, Training Lieutenant.

Volunteers are the heart of our Operations Division, and also support our Public Information Officer role and Prevention programs.

Residents, Businesses & Guests of the Estes Valley

BOARD OF DIRECTORS

Jon Hodde– President
 Larry Leaming– Vice President
 Brian Tseng – Treasurer
 Dave Hamrick – Secretary
 Ryan Bross – At Large

