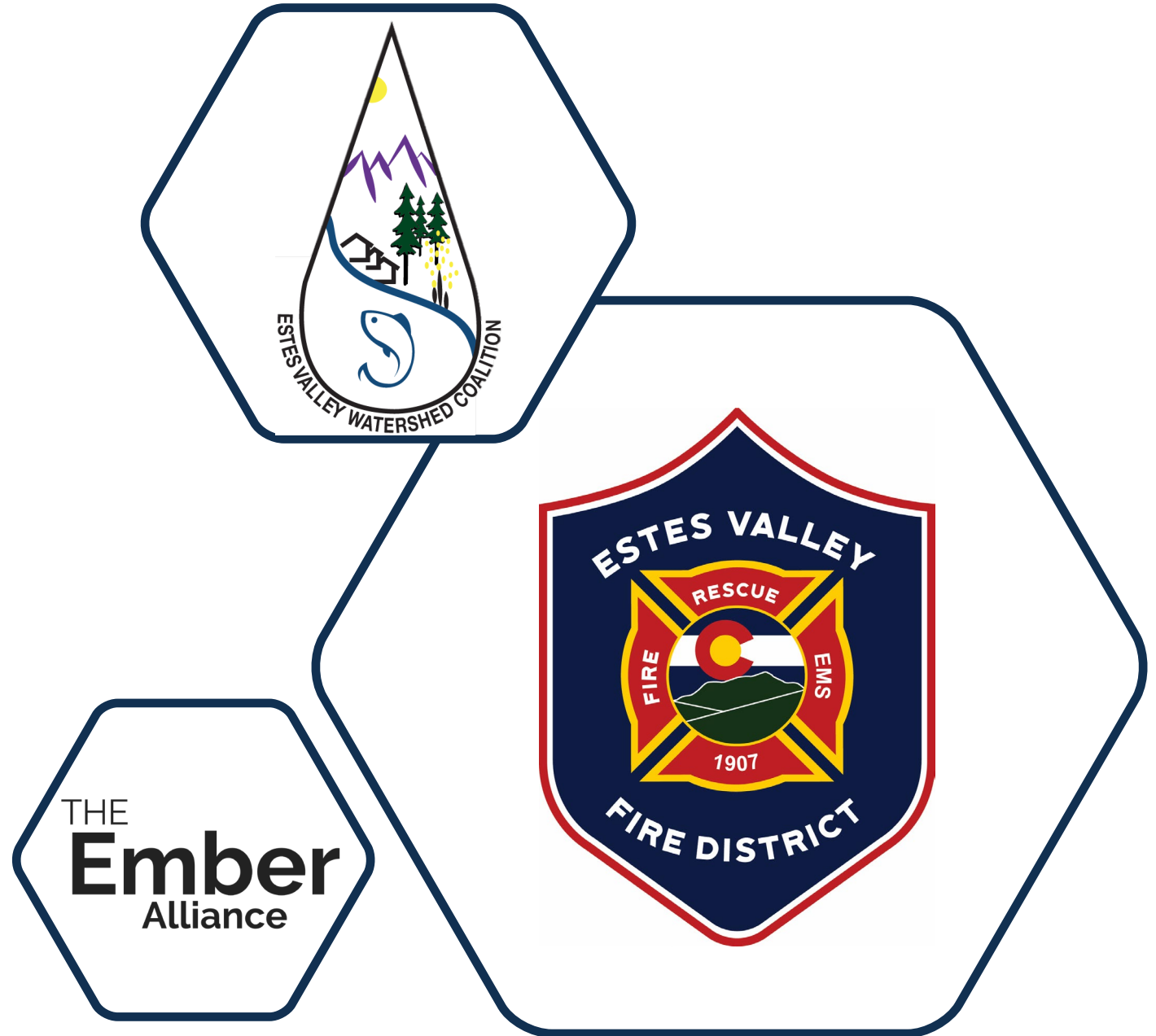


Estes Valley Fire Protection District Community Wildfire Protection Plan

Results and Next Steps



START TIME	FACILITATOR(S)	DESCRIPTION
5:30	Corrina Marshall	Introductions
5:40	David Wolf	The Need for a CWPP
5:45	Kenzie Hartt	CWPP Overview
5:50	Meg Matonis	CWPP Analyses & Prioritization
6:00	Corrina Marshall	Implementation Recommendations
6:10	Project Partners	Success Stories
6:25	Project Partners	Available Programs and Funding (Time for Questions)
6:55	TEA and Project Partners	Q & A
7:25	Corrina Marshall	Next Steps and Closing



Meeting Goals

Discuss community fire risk and priority actions

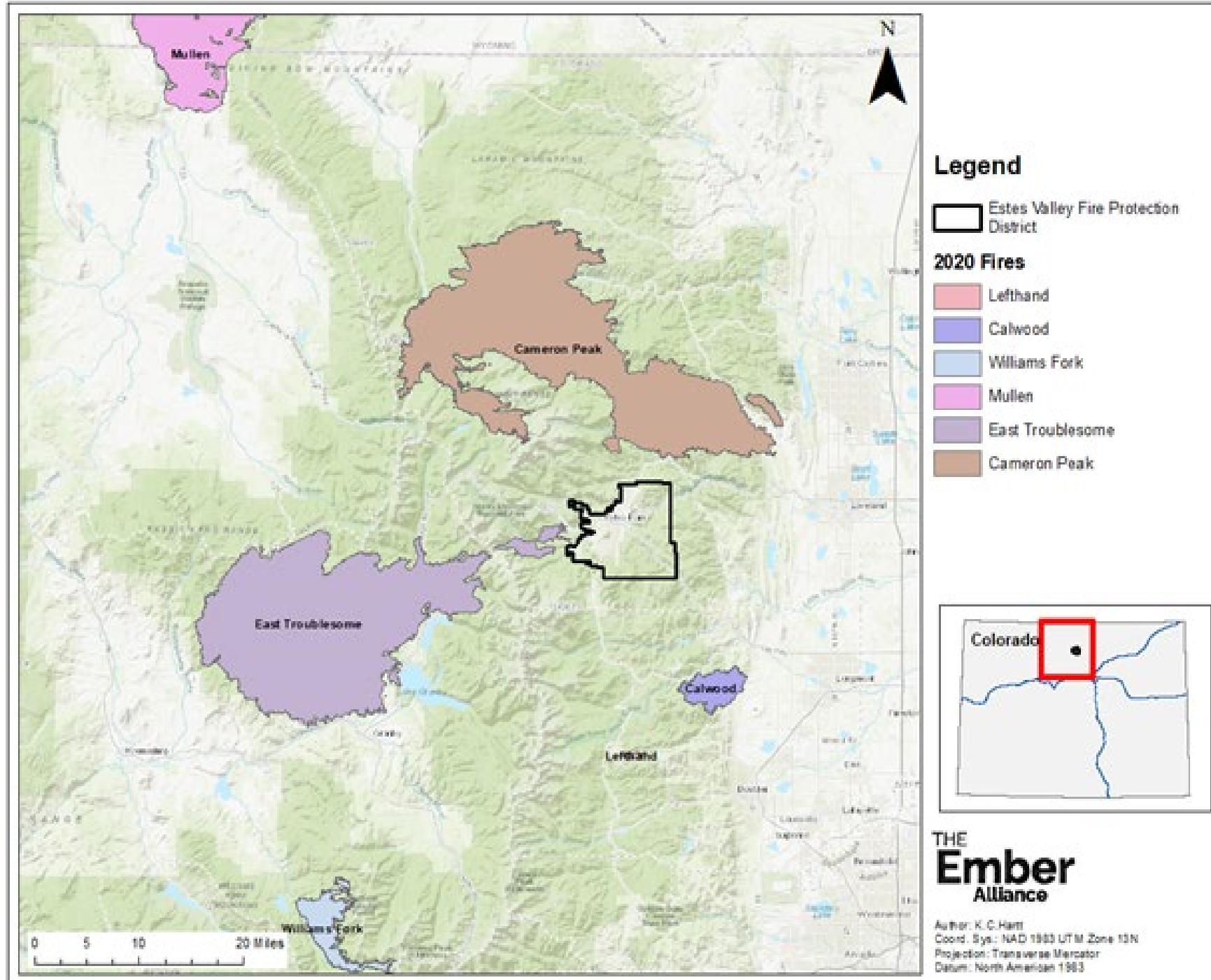
Review actions community and residents can take

Find resources for your next steps



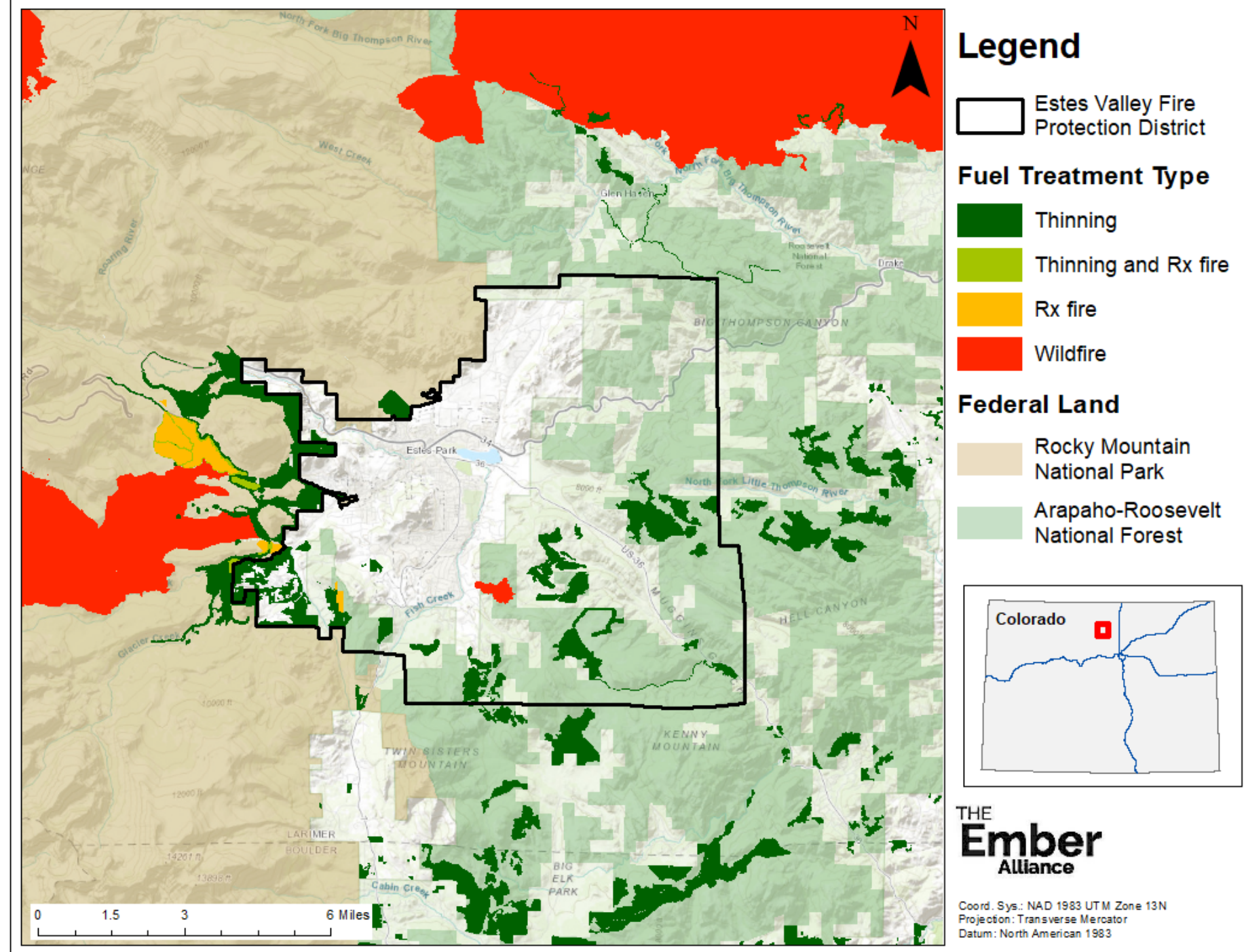


The Need for a CWPP





The Need for a CWPP



Fire Adapted Community

A community consisting of informed and prepared citizens collaboratively planning and taking action to safely coexist with wildland fire.

(National Wildfire Coordinating Group definition)





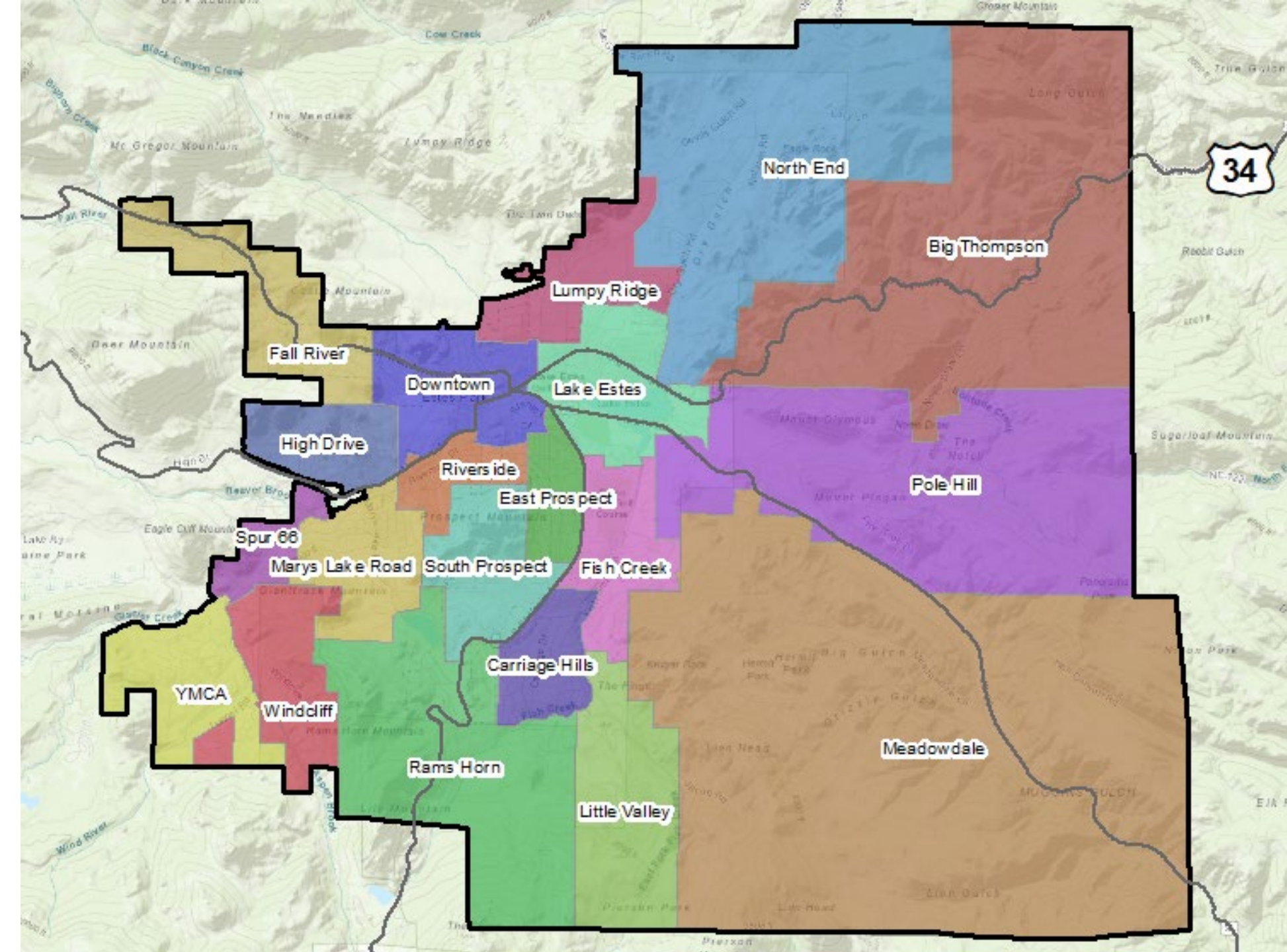
Community Wildfire Protection Plan

Community Engagement

Wildfire Risk Analysis

Project Prioritization

On-the-Ground Action



Plan Units

- Big Thompson
- Carriage Hills
- Downtown
- East Prospect
- Fall River
- Fish Creek
- High Drive
- Lake Estes
- Little Valley
- Lumpy Ridge
- Marys Lake Road
- Meadowdale
- North End
- Pole Hill
- Rams Horn
- Riverside
- South Prospect
- Spur 66
- Windcliff
- YMCA



Diverse Forest and Fuel Conditions

- Mixed conifer forest
- Ponderosa woodlands
- Grassland



Fire Behavior Assessment



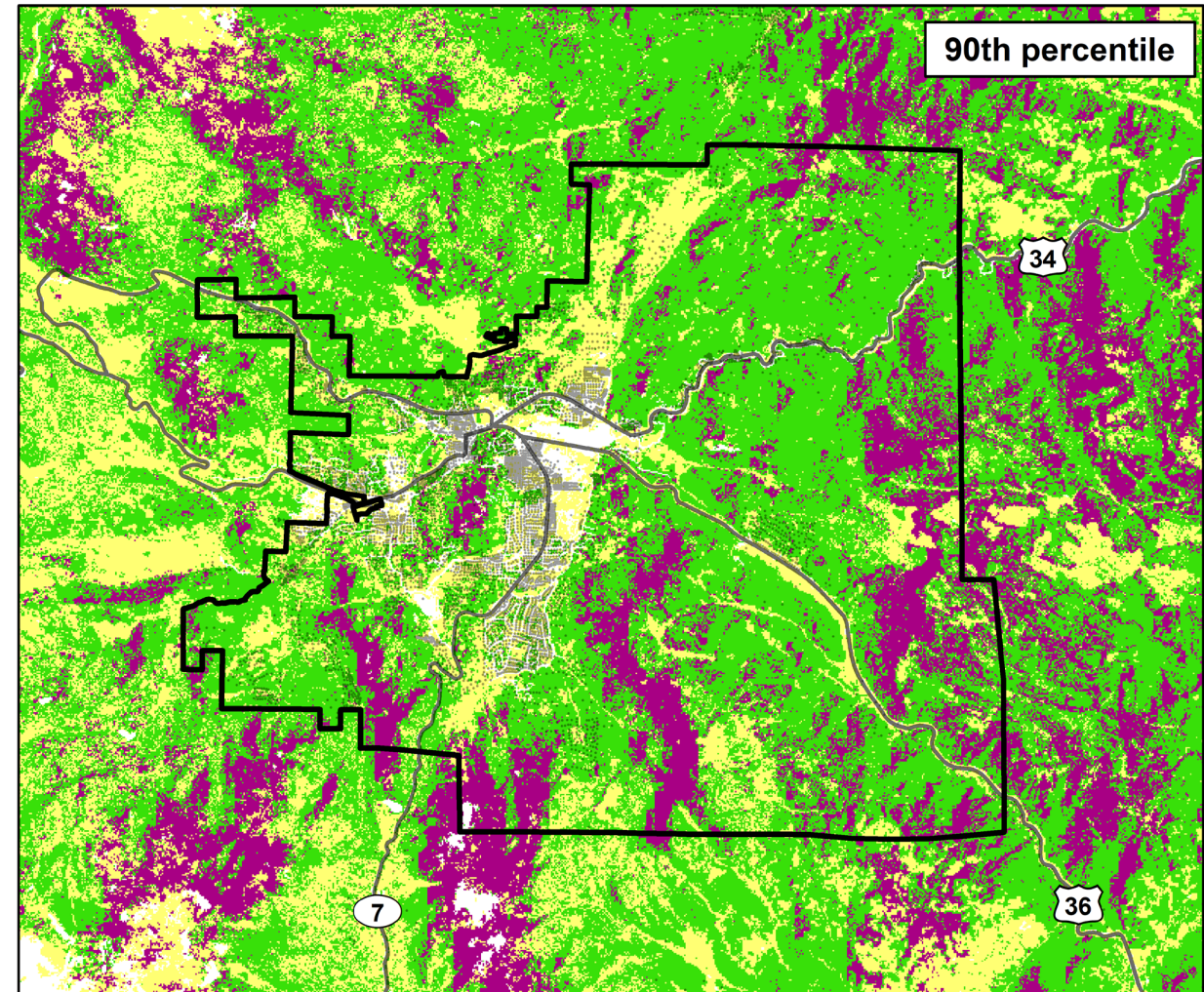
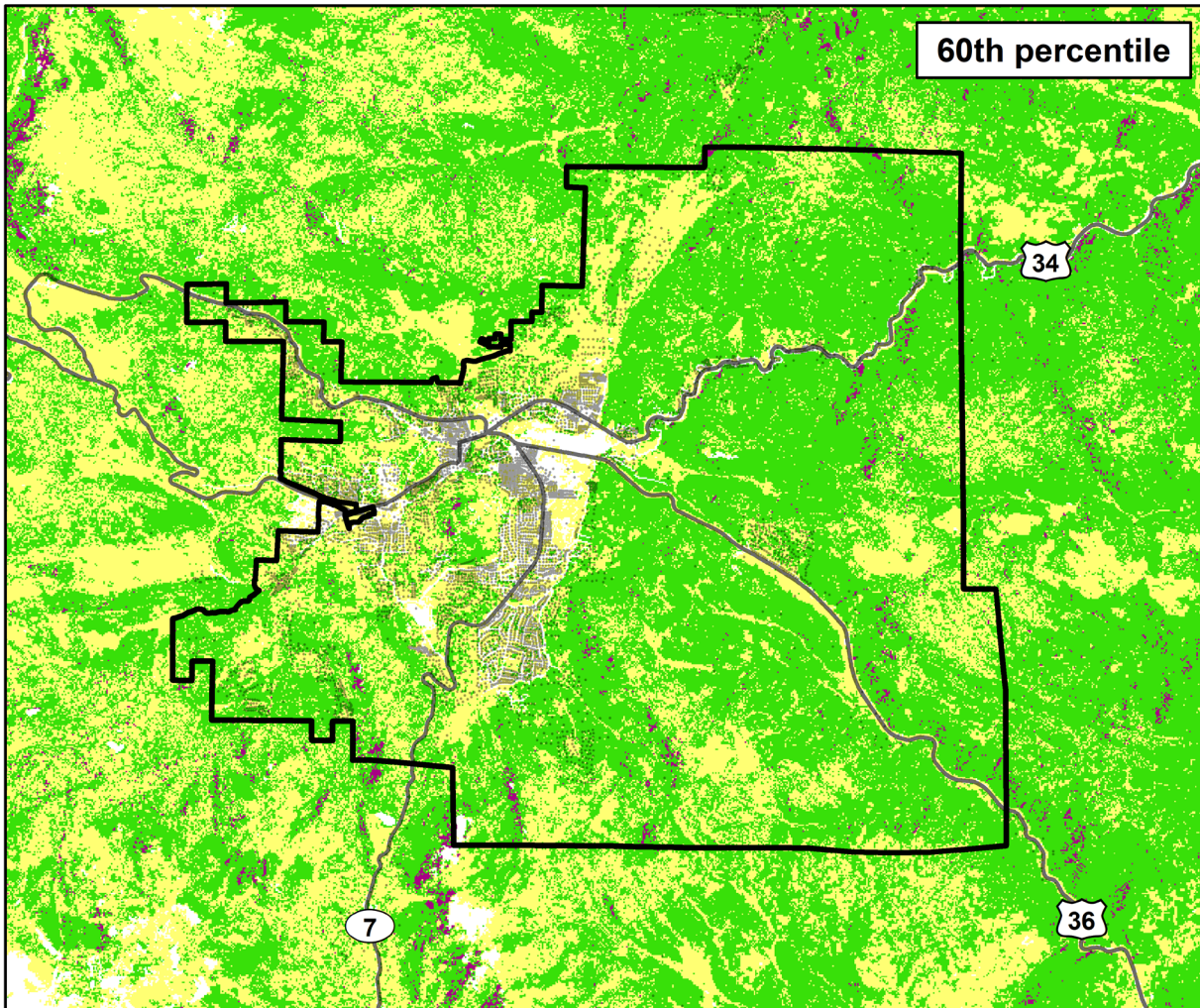
Active crown fire
Mainly aerial fuels
involved in fire spread
across landscape






Passive crown fire
Patches of stand torching
but fire spread mainly
through surface fuels




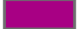


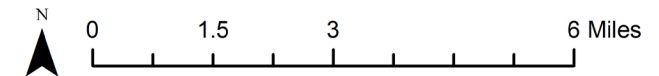
Surface fire
Mainly surface fuels
involved in fire
spread



-  Estes Valley FPD
-  Major roads
-  Addresses

Legend

- Crown fire activity**
-  Unburnable / not modeled
 -  Surface fire
 -  Passive crown fire
 -  Active crown fire





Prioritization

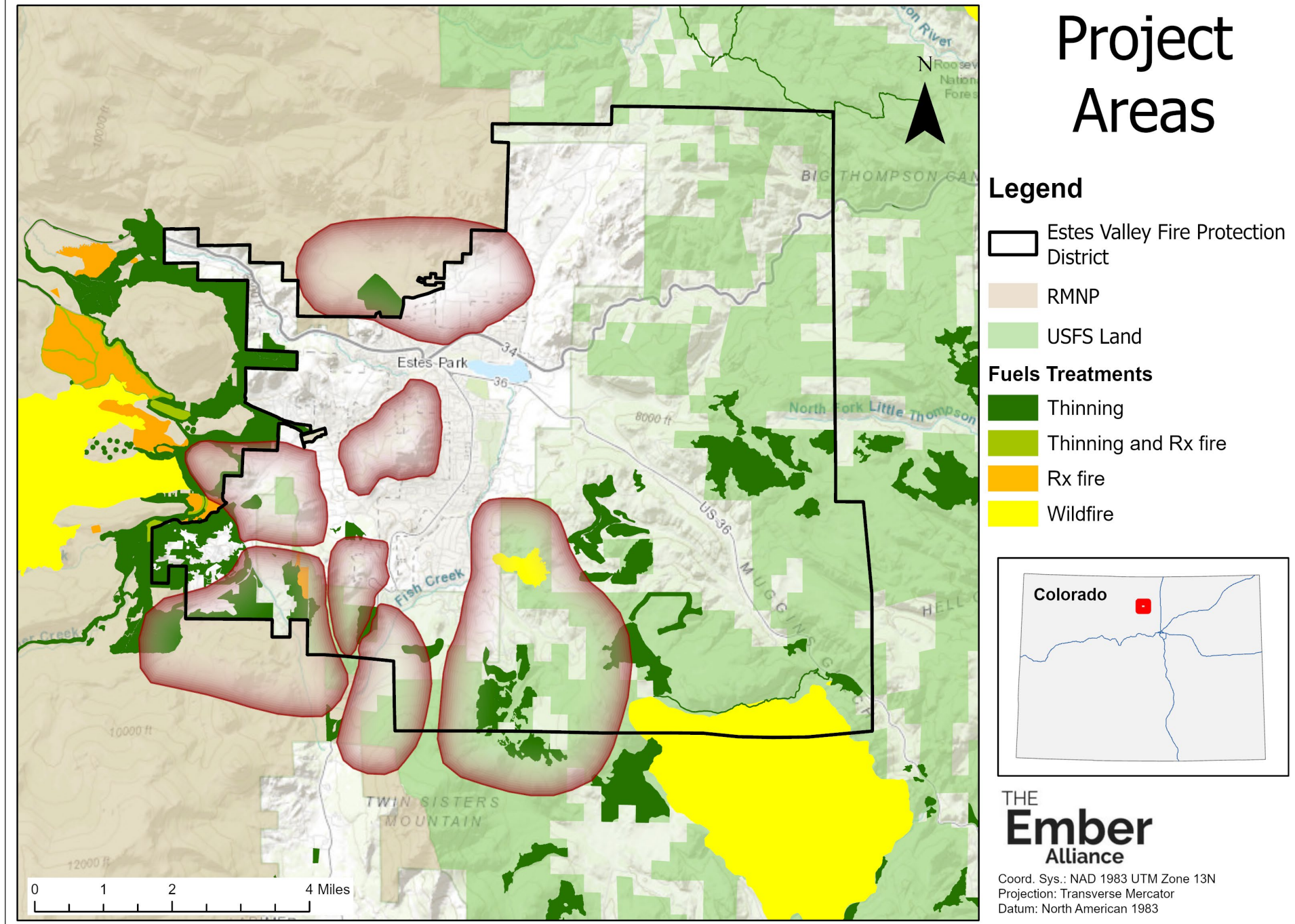
Priority Project Areas


Highest-risk Plan Units

Project Areas

Priority locations
for agencies and
land managers to
direct resources in
the next 5 years.

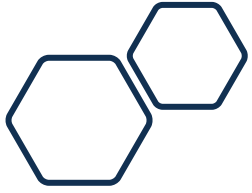
Treatments here
will benefit the
whole community.





What if I
don't live in a
project area?

- All project locations in the valley are important
- Everyone in the valley has a role to play in mitigating wildfire risk
- Follow guidance from the recommendations for your plan unit



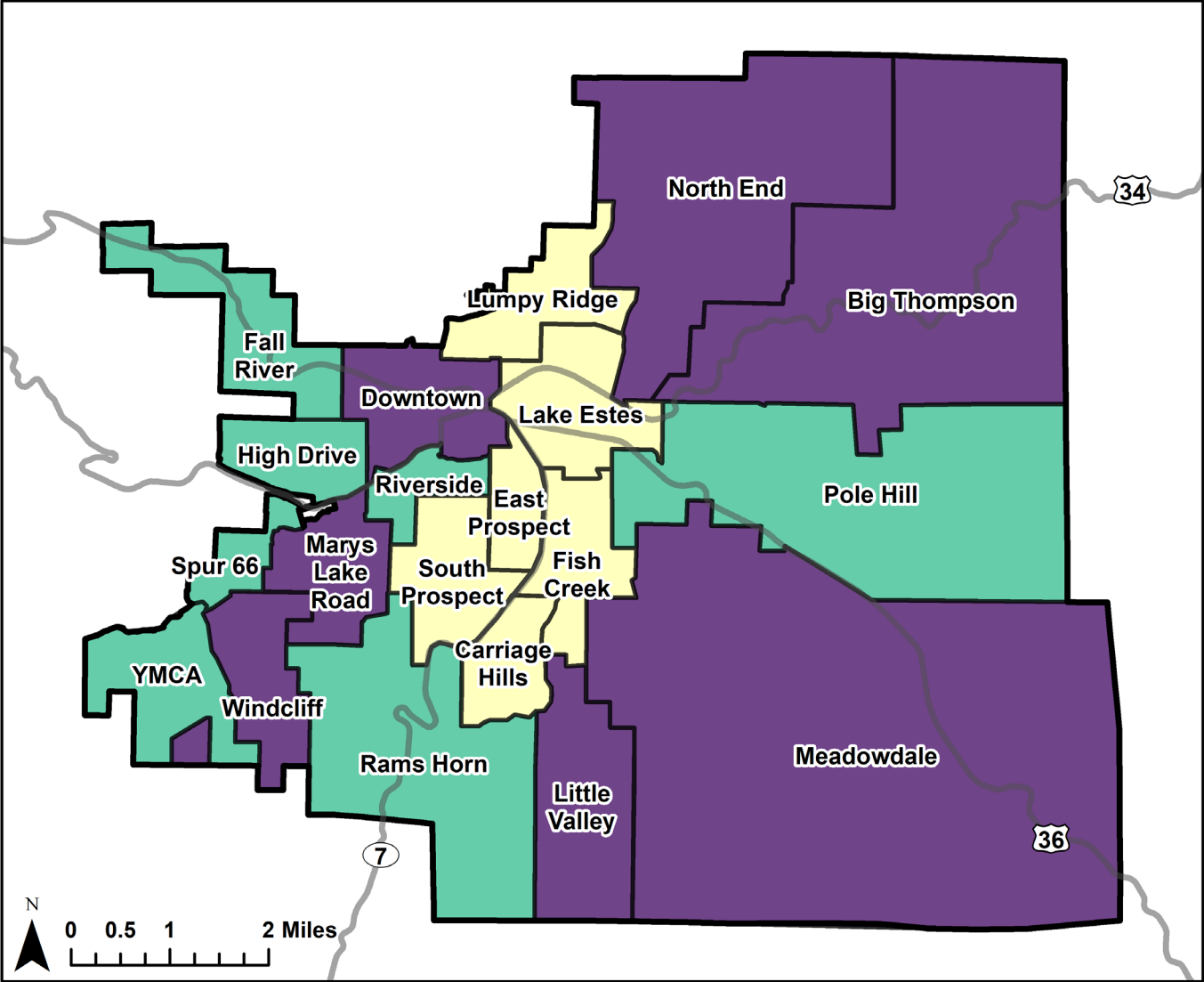
Prioritization: Plan Units Relative Risk to Structures

- **Fire Risk**
- **Fire Suppression (e.g., limited hydrant availability and engine access)**
- **Evacuation Hazards**
- **Home Ignition Zone Hazards**

Our assessment was based on predictions of fire behavior, radiant heat and spotting potential, roadway survivability, and evacuation time, as well as an on-the-ground assessment of each planning unit.



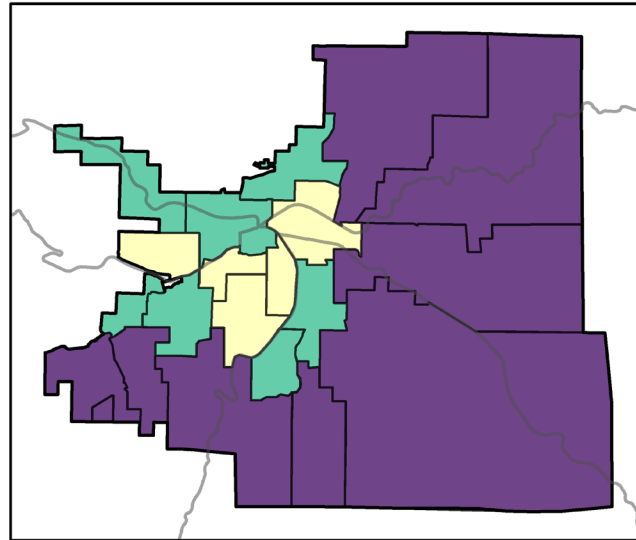
Overall Relative Risk within Estes Valley Fire Protection District



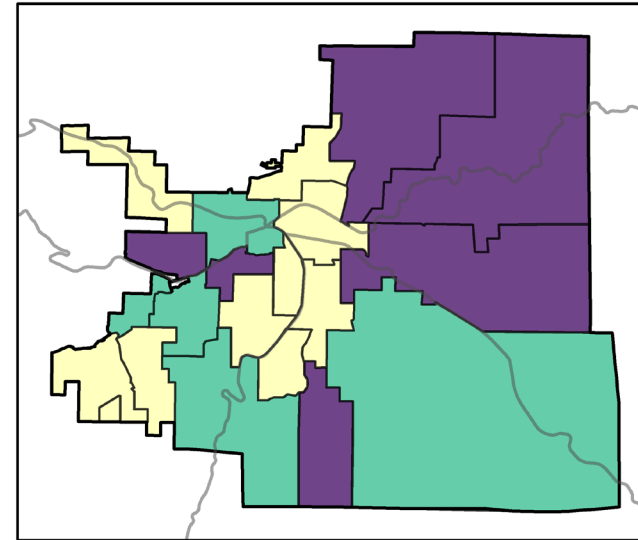
Relative Risk Rating by CWPP Plan Unit

Extreme High Moderate

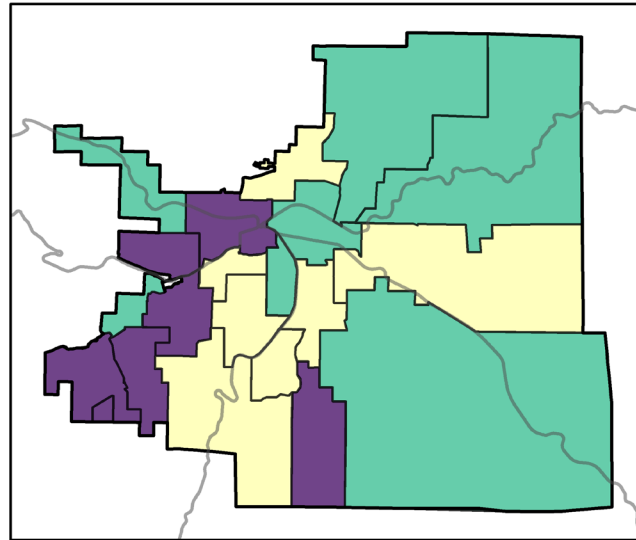
Fire Risk



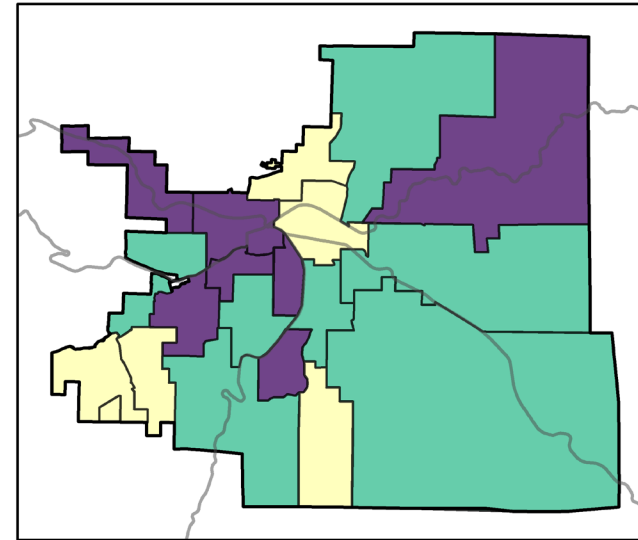
Suppression Challenges



Evacuation Hazards



Home Ignition Zone Hazards



Relative Risk Rating by CWPP Plan Unit





Shared Implementation Responsibility

Individual: Home Ignition Zone and Defensible Space

Communities: Coordinated Mitigation by Plan Unit

District: Strategic landscape and roadway fuel treatments in priority areas

Fire-suppressed forest



Ecologically managed forest



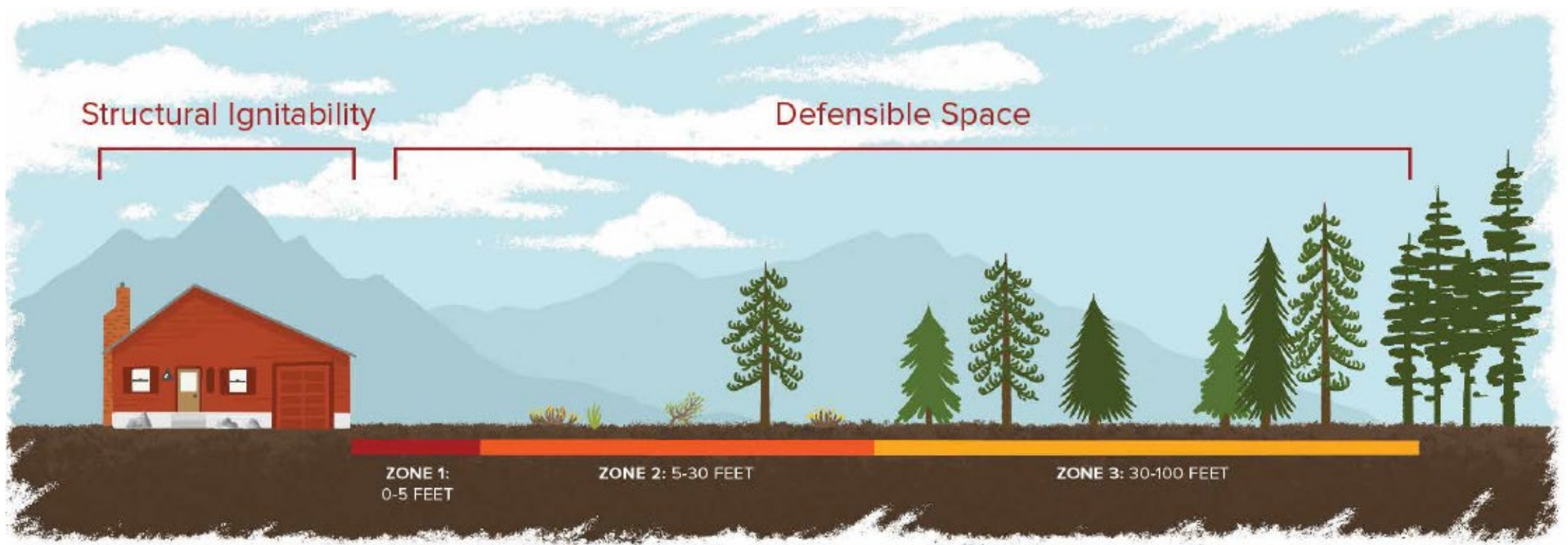


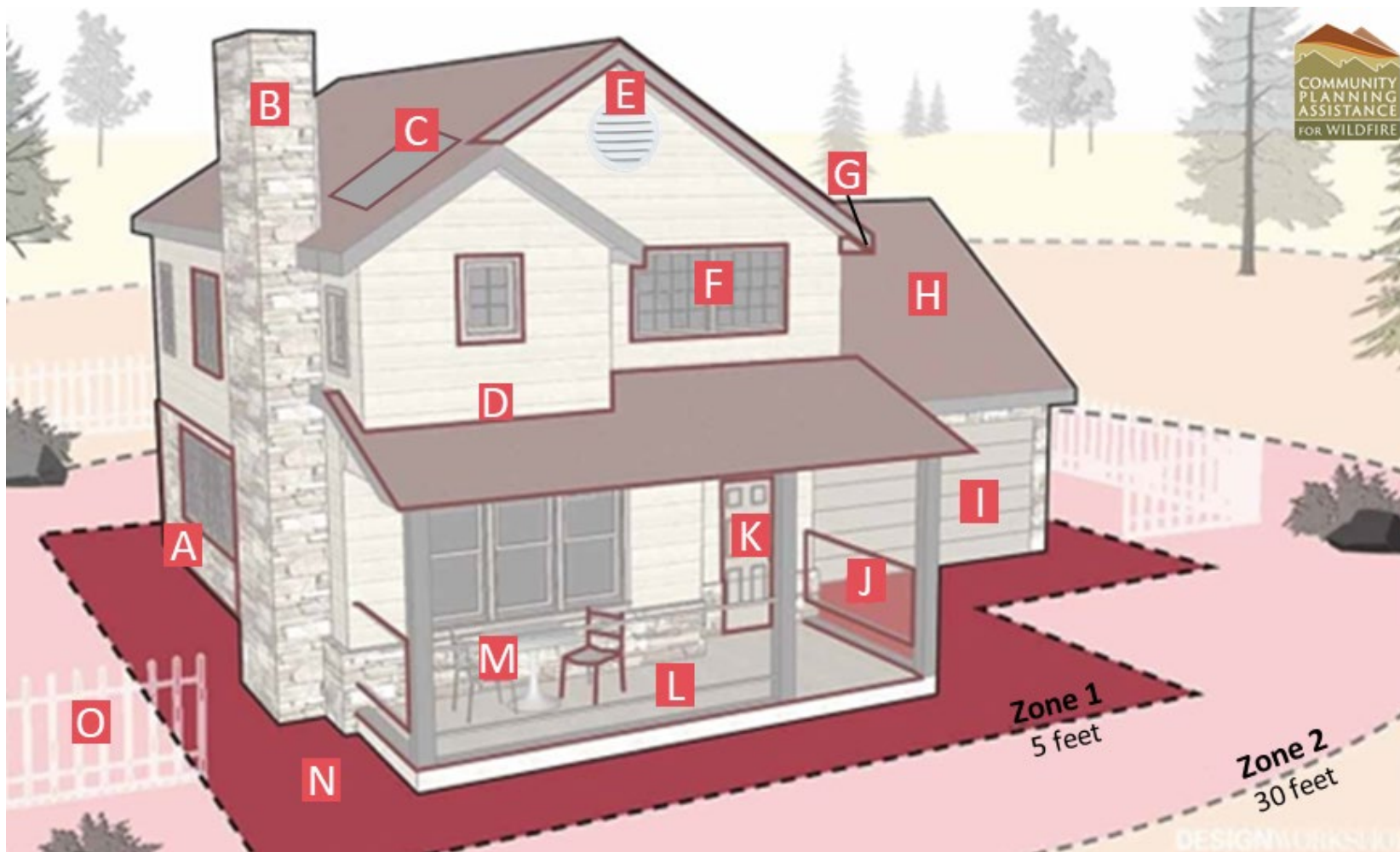
Illustration: Bonnie Palmatory, Colorado State University

Home Ignition Zone



See the CWPP for practices to mitigate your home ignition zone

Home Ignition Zone

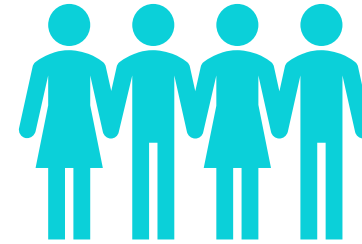


Example home hardening practices:

- A.** Use noncombustible or ignition resistant siding and trim
- G.** Clear debris from roof and gutters regularly. Install noncombustible gutters, gutter covers, and downspouts.
- M.** Use noncombustible patio furniture.
- N.** Establish and maintain a 5-foot noncombustible buffer around the home.
- O.** Replace wooden fences with noncombustible materials and keep at least 8 feet away from the home.

See the CWPP for home hardening tips associated with each letter in the figure

Community Organization



Recommendations for
Plan Units

Neighborhood
Champions

Success Stories

Learn about how local residents
utilized resources to complete
wildfire mitigation



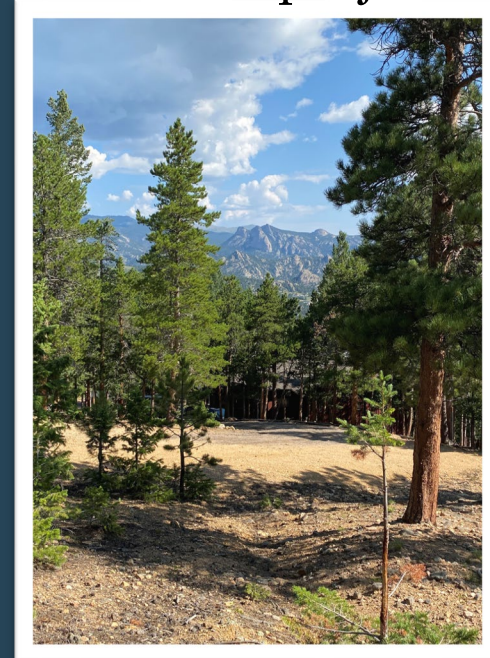
Estes Valley Watershed Coalition



Grassroots organization started in
2015

Primary goal was
coordinating flood recovery
projects

- Coordinating 8 projects and initiatives
- Projects support our mission to protect the water, forests, and wildlife



Marys Lake Project



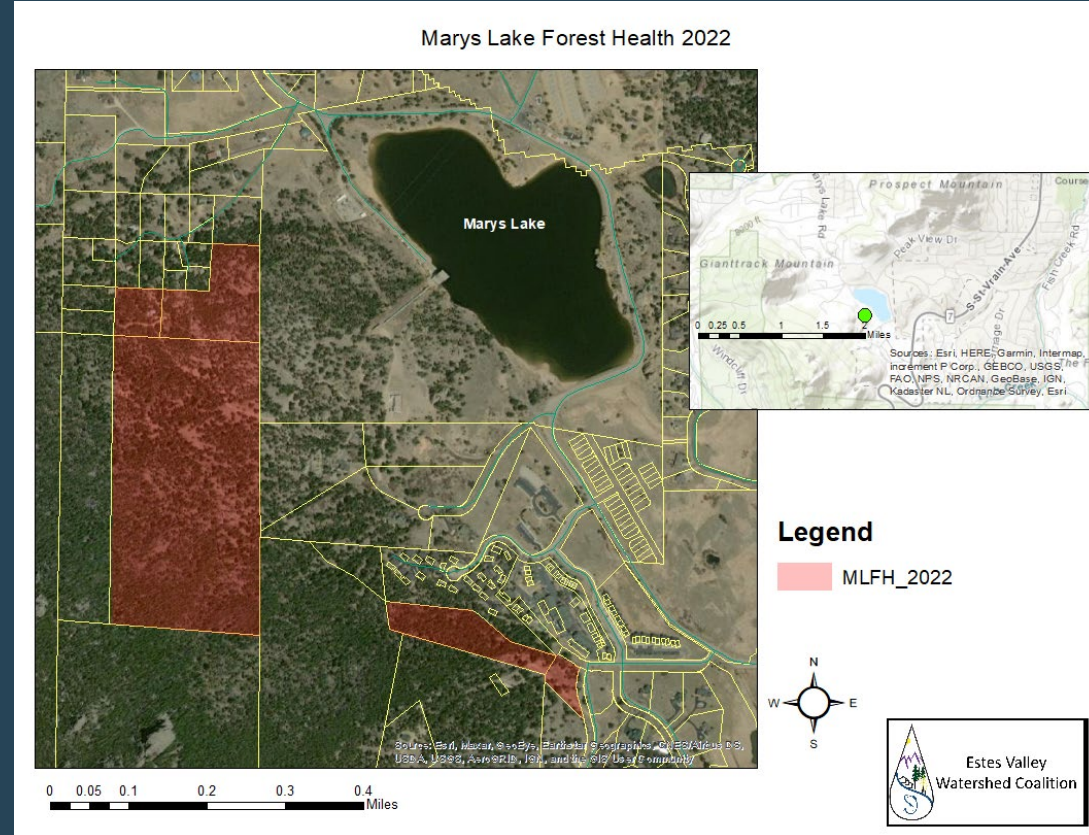
Supports the CWPP



- Help coordinate mitigation on private lands
- Reduce wildfire impacts to the water supply and Estes community
- Community engagement and conversations

Partners

- Colorado State Forest Service
- Town of Estes Park
- Estes Valley Fire Protection District
- Northern Water
- Village Thrift Shop
- Larimer County OEM



Contact Information



Wilynn Formeller

970-290-1829

wilynn.formeller@evwatershed.org

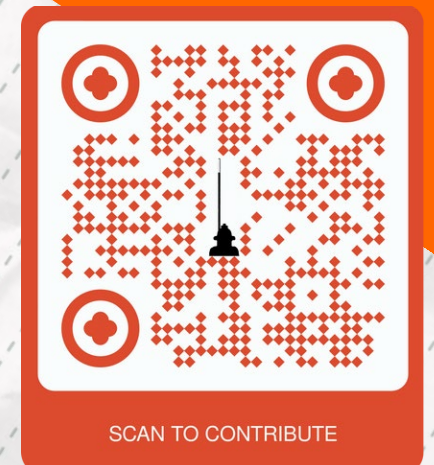
www.evwatershed.org

Estes Park Newcomers Fire Mitigation Project

IN ALLIANCE WITH THE ESTES VALLEY FIRE
PROTECTION DISTRICT

GOAL: 700 Fire Hydrant Markers

For \$30
you can help put a marker
on a fire hydrant in the
Estes Valley so it can be
easily found if covered by
plowed snow or tall
vegetation





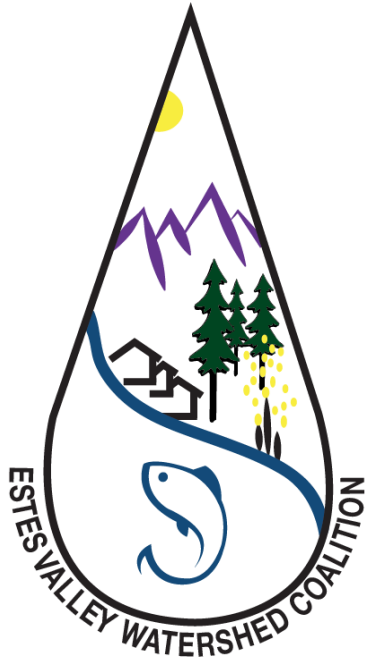
Takeaways

Areas of High-Risk present in this Fire Protection District

Shared Implementation Responsibility

Estes Valley Fire and agency partners work at landscape scale

Residents can do their part with the Home Ignition Zone



Available Programs, Funding & Resources

Do you have any
questions about the
CWPP process, risk
analysis, and
prioritization?





Next Steps for CWPP

Receive community feedback on CWPP



Finalize CWPP Project on June 30



Thank you!