

Wildland Program



We strive to prevent fires and disasters in our community for many reasons. First and foremost is to protect life and property. Another major goal is to avoid impacts to our local economy, supporting everyone who lives, works, and visits.

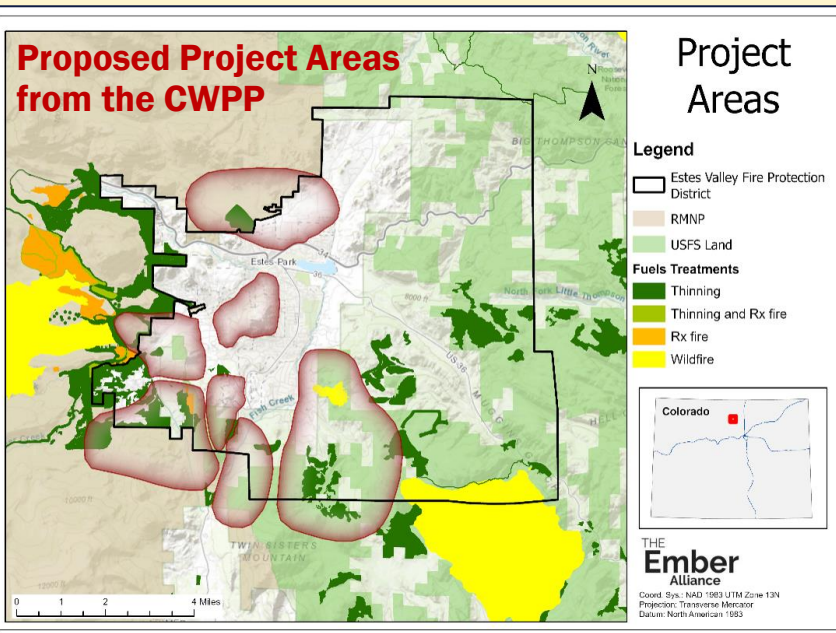
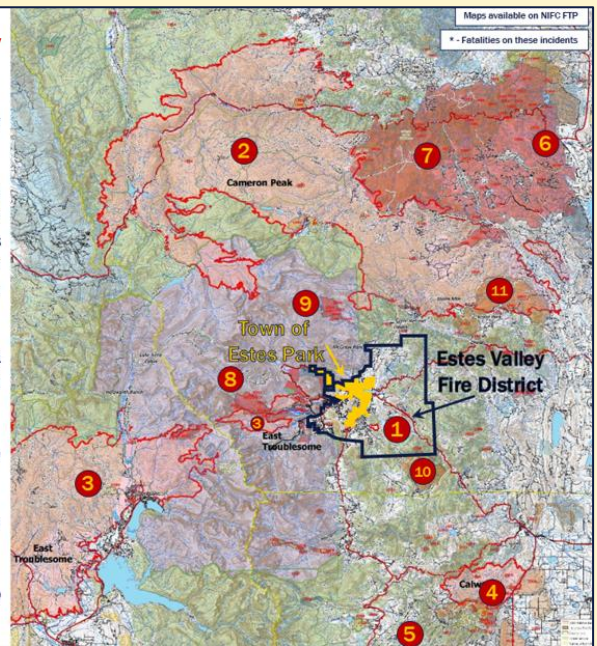
Our community is no stranger to wildfire. The Cameron Peak and East Troublesome Fires hit in 2020, forcing an evacuation of the entire community. In 2021 the Kruger Mountain Fire again displaced residents, and we experienced the unfortunate death of pilot Marc Thor Olson.

Thanks to help from the Estes Valley Watershed Coalition and Town of Estes Park, we updated our CWPP (Community Wildfire Protection Plan). This plan outlines the risk areas across our community and provides a framework to address these risks at the (1) homeowner, (2) neighborhood, and (3) community level.

Implementation of the CWPP will help our community decrease the chance of these events and lessen their impacts when they do occur.

Wildfire History

▪ 2021		
1. Kruger Mountain*	147	
▪ 2020		
2. Cameron Peak	208,663	
3. East Troublesome	192,560	
4. Calwood	10,106	
5. Lefthand Canyon	460	
6. Lewstone	165	
▪ 2012		
7. High Park	87,284	
8. Fern Lake	3,500	
▪ 2010		
9. Cow Creek	1,500	
▪ 2002		
10. Big Elk*	4,800	
▪ 2000		
11. Bobcat Ridge	10,599	
(EVFPD ≈ 45,000 acres)		



As we continue to develop our prevention programs, we have a focus on education, outreach, and getting the right information into the hands of our residents and guests.

We hope everyone continues to reference guides and resources on our website and seeks the information to be part of the solution, making our community safer.